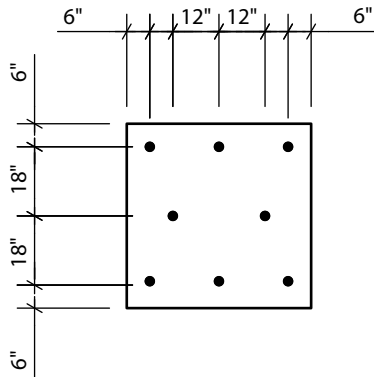



4' x 8'-(16) FASTENERS/BD.



4' x 4'-(8) FASTENERS/BD.

NOTES:

1. THICKNESS OF INSULATION SHALL BE 1.3" TO 1.4"
2. SEE FACTORY MUTUAL APPROVAL GUIDE FOR APPROVED FASTENERS/PLATES
3. FM 1-90 FASTENING PATTERN
4. REFER TO LOSS PREVENTION DATA SHEET 1-29 OR CONSULT THE ROOF SYSTEM MANUFACTURER FOR PERIMETER AND CORNER ENHANCEMENT RECOMMENDATIONS

DRAWING NO. FA-1	ACFoam-II; ACFoam III ADHERED SINGLE PLY SYSTEMS				
	REVISION 0	ISSUE DATE 7-16-02	SCALE N.T.S.	DRAWN BY P.J.W.	